



Skylounge whirlpool

**DOMINATOR 40M**



Skylounge

**DOMINATOR 40M**



Main saloon

DOMINATOR 40M



Dining area

**DOMINATOR 40M**



Main saloon

DOMINATOR 40M



Lower deck lobby

**DOMINATOR 40M**



Owner's cabin

DOMINATOR 40M



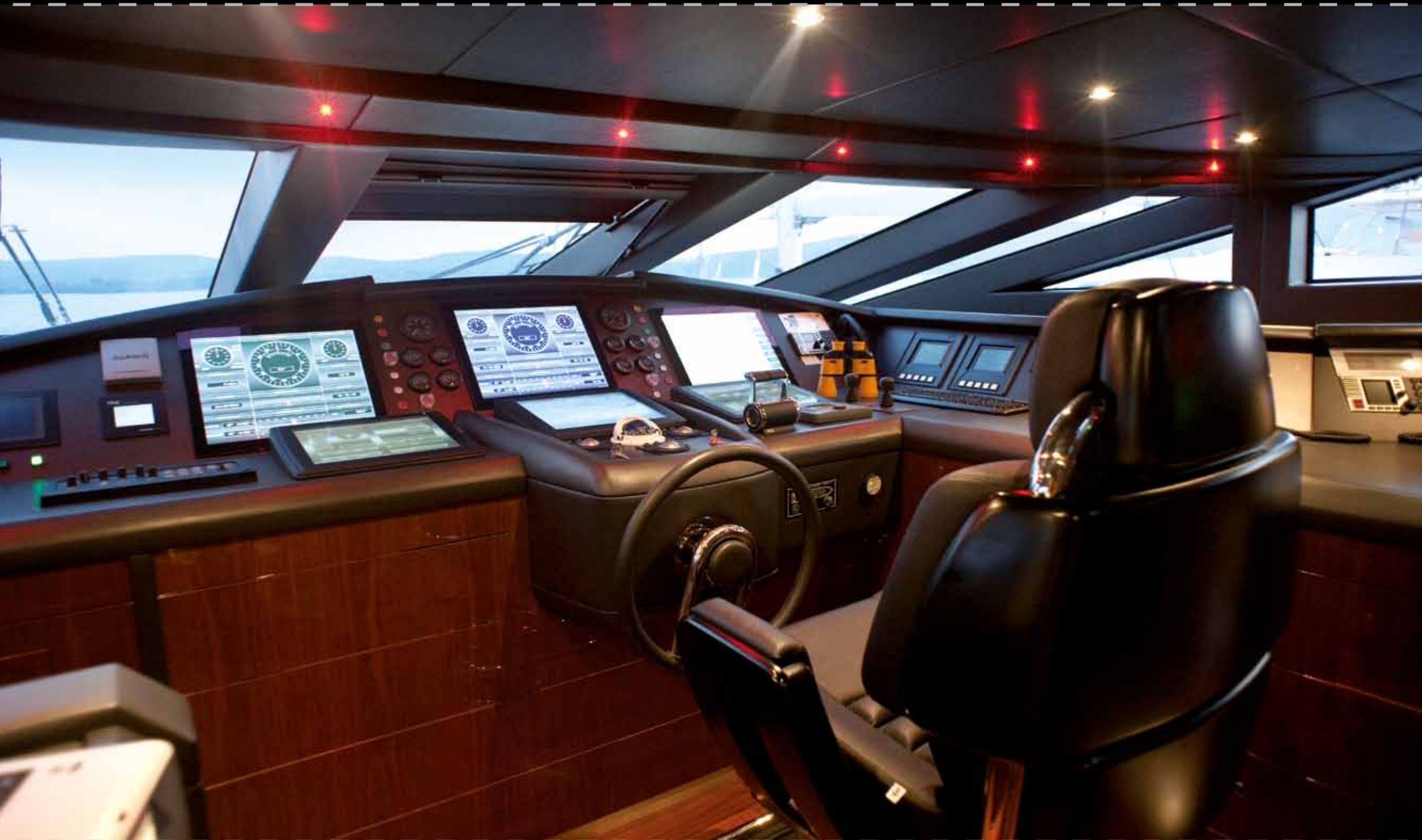
Vip cabin

DOMINATOR 40M



Guest cabin

DOMINATOR 40M



Wheelhouse

DOMINATOR 40M



DOMINATOR 40M



**DOMINATOR 40M**



DOMINATOR 40M



DOMINATOR 40M



DOMINATOR 40M



**DOMINATOR 40M**



**DOMINATOR 40M**

# Technical Specifications DOMINATOR 40M



- Length overall 40,00 m
- Maximum beam 7,75 m
- Displacement 150 tons
- Diesel fuel-oil standard capacity 17000 L
- Diesel fuel-oil extra capacity 8000 L
- Fresh water capacity 3000 L
- Sewage water capacity 2000 L
- Top speed (standard condition light ship) 25/30/33 kts
- Cruising speed (standard condition light ship/no stabilisators) 22/27/30 kts
- Range @10-11 knots approx. 2000 Nm
- Engines MTU 16 V 2000 M94 2x2600HP  
(optional) MTU 12 V 4000 M93L 2x3500HP  
(optional) MTU 16 V 2000 M94 3x2600HP with KAMeWA waterjet
- Generators 2x50 Kw
- Hull, decks and superstructural material Aluminium 5083 H11

## INTERNAL DISTRIBUTION

- Owner's & Guest 8 (1 Owner's suite + 2 Guest cabins + 1 Vip cabins)
- Crew 5 (2 twin cabins + 1 single cabin)

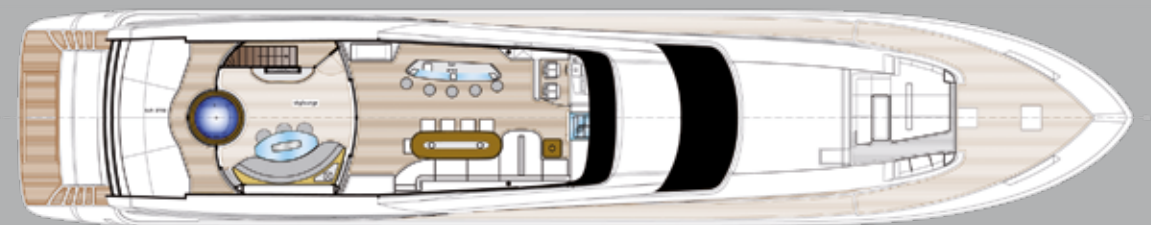
Exterior and interior design:



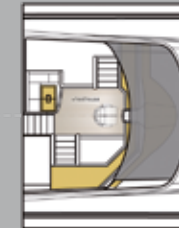
DESIGN BY ENRICO GOBBI

Naval architecture: Arrabito Naval Architects  
Engineering: Dominator Yachts Engineering Division

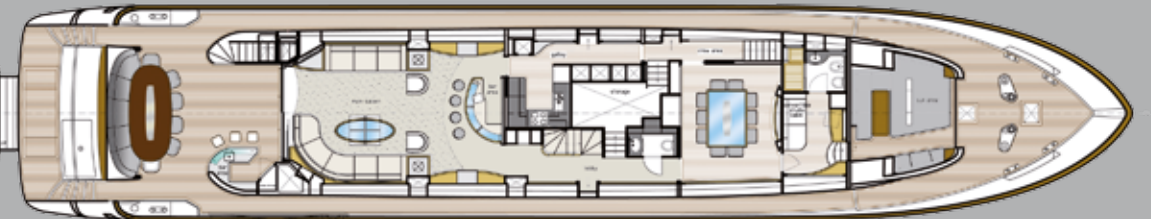
© 2010 by TEAM 4 DESIGN - All rights reserved.



Fly/skylounge Deck



Pilot house Deck



Main Deck



Deck

There may be items shown in these photographs and artist impressions that are not included in the standard inventory of the models shown. Any eventual print mistake can not be considered as object of claim.

The information in this brochure has been gathered and processed with scrupulous attention by Dominator Yachts, nevertheless this information may contain printing errors or not be completely updated with regard to technical matters. The company reserves the right to change or update any information and to make improvements or changes to its products, without prior notice. This means that the information in this brochure does not in any way represent a guarantee, and it follows that Dominator Yachts accepts no responsibility whatsoever for damage caused by access to this brochure. Anyone wishing to purchase a Dominator Yachts product must check personally that the said product corresponds to descriptions and genuinely meets the needs and requirements of the purchaser.